

CAST IRON HOUSE

SHIGERU BAN

6C

5 BEDROOMS · 5 BATHROOMS

TOTAL AREA
4,897 SQ FT · 455 SQ M

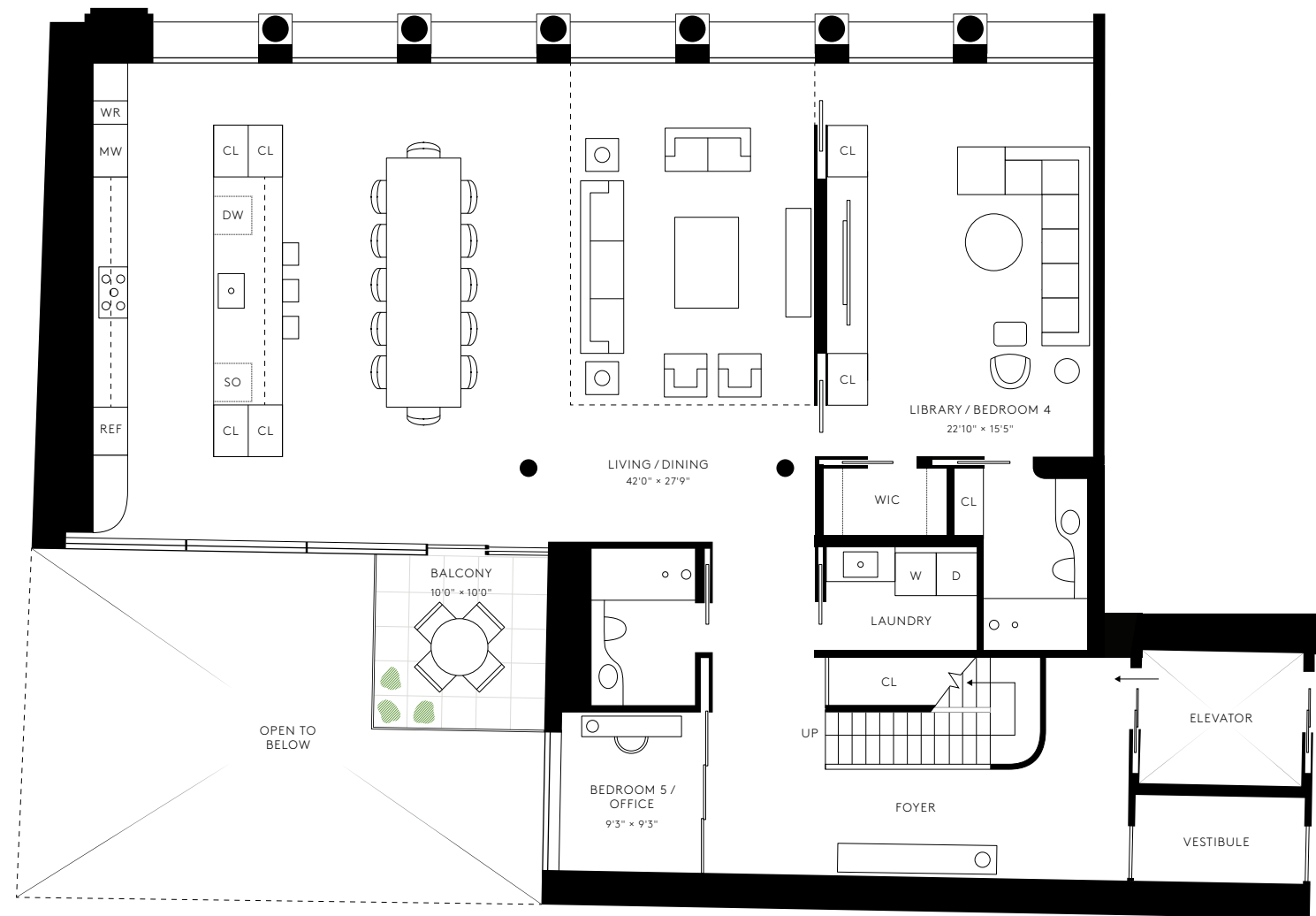
FIRST FLOOR
2,590 SQ FT · 241 SQ M

FIRST FLOOR BALCONY
100 SQ FT · 9 SQ M

SECOND FLOOR
2,307 SQ FT · 214 SQ M

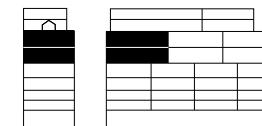
- DIRECT ELEVATOR ENTRY
- DOUBLE-HEIGHT LIVING ROOM WITH 25' CEILINGS
- BALCONY OFF MAIN LIVING SPACE
- CUSTOM KITCHEN WITH OVERSIZED ISLAND
- LIBRARY WITH EN SUITE BATHROOM
- MASTER BEDROOM SUITE WITH EXPANSIVE, WINDOWED DRESSING ROOM
- INTEGRATED BEDROOM GALLERY STUDY
- LAUNDRY ROOM WITH SIDE-BY-SIDE WASHER AND DRYER AND UTILITY SINK

WWW.CASTIRONHOUSE.COM
212 577 0067



FIRST FLOOR

This advertisement is not an offering. It is a solicitation of interest in the advertised property. No offering of the advertised units can be made and no deposits can be accepted, or reservations, binding or non-binding, can be made until an offering plan is filed with the New York State Department of Law. This advertisement is made pursuant to Cooperative Policy Statement No. 1, issued by the New York State Department of Law. File No. CP13-0046. 361 Broadway Associates Holding, LLC. 68 Thomas Street, New York, NY, 10013.



CAST IRON HOUSE

SHIGERU BAN

6C

5 BEDROOMS · 5 BATHROOMS

TOTAL AREA
4,897 SQ FT · 455 SQ M

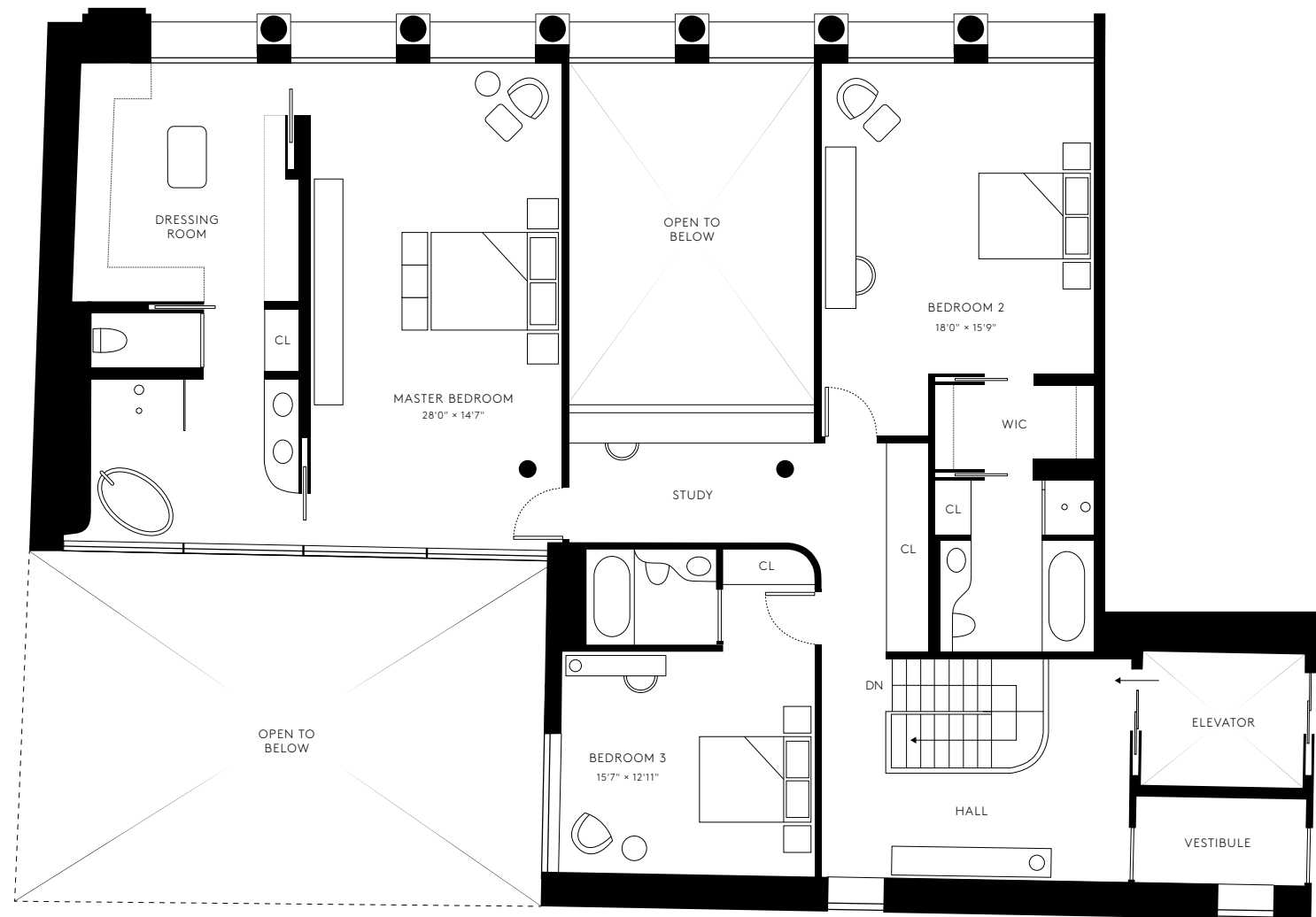
FIRST FLOOR
2,590 SQ FT · 241 SQ M

FIRST FLOOR BALCONY
100 SQ FT · 9 SQ M

SECOND FLOOR
2,307 SQ FT · 214 SQ M

- DIRECT ELEVATOR ENTRY
- DOUBLE-HEIGHT LIVING ROOM WITH 25' CEILINGS
- BALCONY OFF MAIN LIVING SPACE
- CUSTOM KITCHEN WITH OVERSIZED ISLAND
- LIBRARY WITH EN SUITE BATHROOM
- MASTER BEDROOM SUITE WITH EXPANSIVE, WINDOWED DRESSING ROOM
- INTEGRATED BEDROOM GALLERY STUDY
- LAUNDRY ROOM WITH SIDE-BY-SIDE WASHER AND DRYER AND UTILITY SINK

WWW.CASTIRONHOUSE.COM
212 577 0067



SECOND FLOOR

This advertisement is not an offering. It is a solicitation of interest in the advertised property. No offering of the advertised units can be made and no deposits can be accepted, or reservations, binding or non-binding, can be made until an offering plan is filed with the New York State Department of Law. This advertisement is made pursuant to Cooperative Policy Statement No. 1, issued by the New York State Department of Law. File No. CP13-0046. 361 Broadway Associates Holding, LLC. 68 Thomas Street, New York, NY, 10013.

